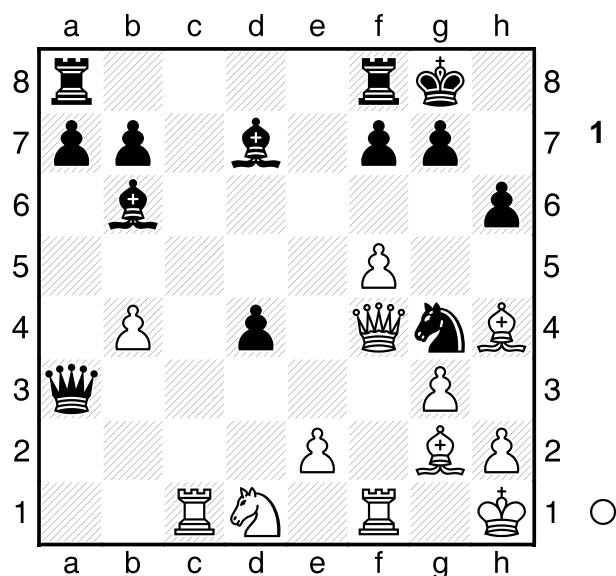


□ Brody, Miklos
 ■ Vidmar, Milan Sr
 Budapest (9)

D34

1913

1.d4 d5 2.Nf3 c5 3.c4 e6 4.cxd5
 exd5 5.Nc3 Nc6 6.g3 Nf6 7.Bg2
 Be7 8.0-0 0-0 9.dxc5 Bxc5 10.Bg5
 Be6 11.Rc1 Be7 12.Nd4 Nxd4
 13.Qxd4 Qa5 14.b4 Qa6 15.f4 h6
 16.Bh4 Bd8 17.Kh1 Bb6 18.Qd2
 Ng4 19.Nd1 d4 20.a4 Qxa4 21.f5
 Bd7 22.Qf4 Qa3 Diagram



23.Qxg4!

[23.f6 is a suggestion of Houdini, and the assessment varies as time passes.]

23...Qxc1 24.Bf6 g6 25.Bd5

Cordingley gave this move an exclamation mark, but in fact, due to a computer defence, it doesn't win.

[25.Nf2 Was the move I chose, bringing another piece to the party: but Houdini says it is losing, to Qe3. Qe3!! (25...h5 Which Houdini at first says is winning for black, after a while changes to slightly better for white: but the evaluations could well change due to horizon effects. 26.Qh4 Qc2

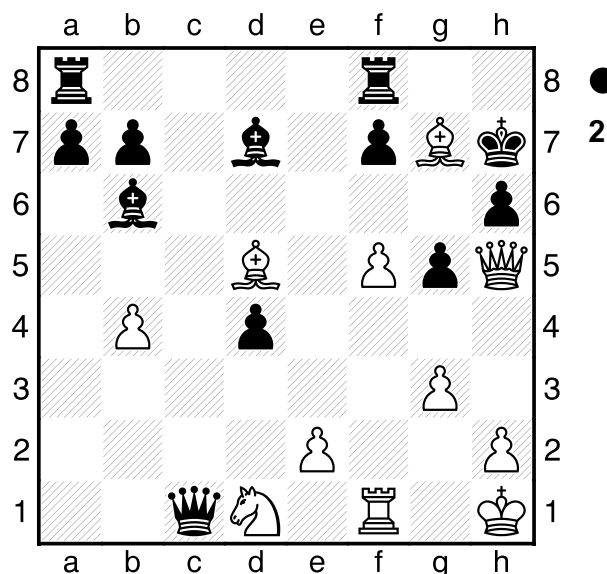
27.Ne4) 26.Qh4 Bxf5 black has just enough control.]

[25.e3 Qc4!! (25...Bc6?)]

25...Bc6??

[25...g5 26.Qh5 Kh7 27.Bg7!!

Diagram



Kxg7 (27...g4 28.e3+-) 28.f6+

Kh7 29.Be4+-]

[25...Bxf5! 26.Rxf5

A) 26...Qxd1+? 27.Kg2 Kh7

28.Rh5! Qc1 29.Bg5 (29.Be4!)

29...Qc2 30.Rxh6+ (30.Be4!)

30...Kg7 31.Be4 is Cordingley's

line, but d3!! which Houdini, at least when left thinking for a minute says is =; but after a minute

switches to +6.4! 32.Bd2 Rh8

33.Rxg6+ fxg6 (33...Kf8 34.Qf4

which Houdini says is +7, but it doesn't seem entirely clear to me.)

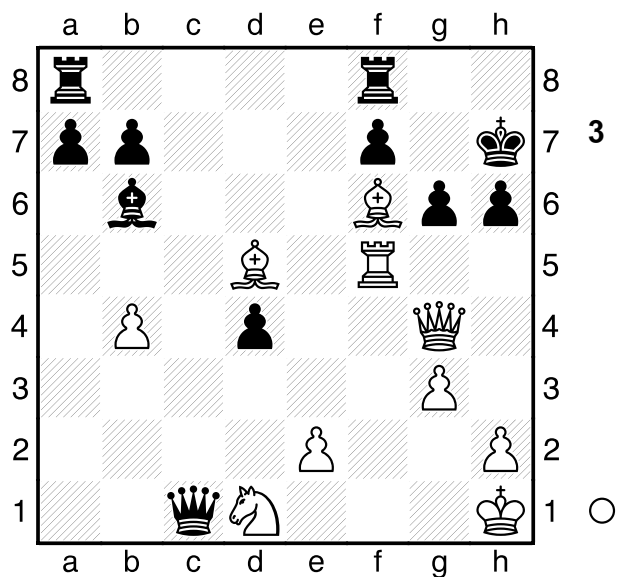
34.Qxg6+ Kf8 35.Qd6+ Kf7

36.Bd5+ Ke8 37.Qe6+ ;

B) 26...Kh7!! Diagram

(Diagram 3)

Quite remarkable: at least until you have seen it; but then black is a lot of material up, and can afford to



give some of it back, here giving
the bishop back, in order to
dampen white's attack- here white's
breaking up of black's pawn
structure. 27.Rf1 Rae8±

Assessed by Houdini3 as +0.5]

26.Qxg6#

1-0