

A18

□ Carls, Carl Johan Margot

■ Johner, Hans

London ol (Men) (8)

23.07.1927

[Beardsworth, Allan]

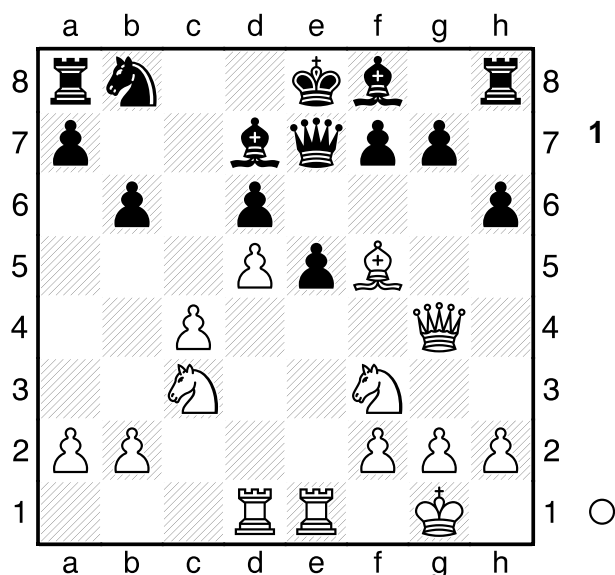
1.c4 Nf6 2.Nc3 e6 3.e4 Bb4 4.e5
Ng8 5.Qg4 Bf8 6.d4 d6 7.Bg5 Qd7
8.Nf3 Nc6 9.Rd1 Nge7 10.Bd3 b6
11.0-0 h6 12.Bxe7 Qxe7+- 13.exd6

[⊞13.Be4 Bb7 14.exd6 cxd6
15.d5]

13...cxd6 14.Rfe1 Bd7 15.d5 e5
16.Bf5

[⊞16.Qg3 Na5 17.Nxe5+-
i.e. the same idea as in the game,
without complexity.]

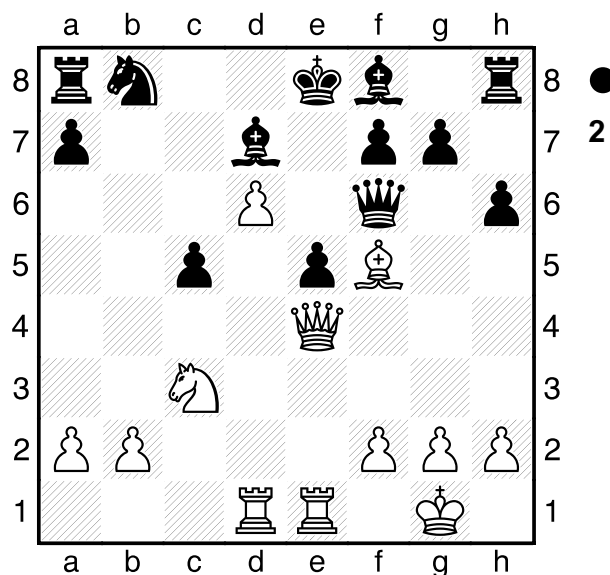
16...Nb8 Diagram



17.Nxe5

[17.c5!! is assessed as best by Houdini after a lot of thinking. When I play the move though, its evaluation goes down initially to leave, after 17...bc, but after a minute jumps up and up. bxc5 18.Nxe5 dxe5 19.d6 Qf6 20.Qe4 Diagram

The reason why Houdini prefers 17c5!! first was very hard for me to see. It was only by a 'method of



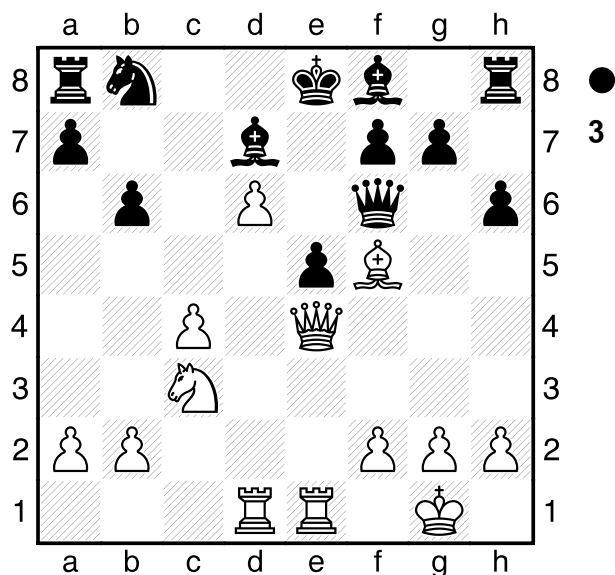
comparison' between this position and the equivalent one after the immediate 17 Ne5 that I eventually saw the reason. Nc6 21.Bxd7+ Kxd7 22.Qa4!! Exclamation marks for the concept, not the move itself. Because of the move 17 c5, which (i) clears the fourth rank -what a line clearance!- and (ii) creates a weakness on c5, it is game over. -- Δ23.Ne4 -- Δ24.Nxc5+ Brilliant and profound] [17.Nb5 Bxf5 18.Qxf5 Qd7 19.Qh5 a6 20.Nxd6+ Bxd6 21.Nxe5 Bxe5 22.Rxe5+ Kf8 23.Rde1+- g6 24.Re8+ Kg7 25.Qe5+] [17.Bxd7+ Nxd7 18.Nd4 is a very natural continuation, which is also good, though doesn't lead to a dramatic win.]

17...dxe5 18.d6 Bxf5

[⊞18...Qf6! was one of the defences I looked at 19.Bxd7+?! (⊞19.Rd5! ; ⊞19.Qe4! Diagram

(Diagram 3)

The comparison position I refer to above. Here, white has some advantage, but the machine only

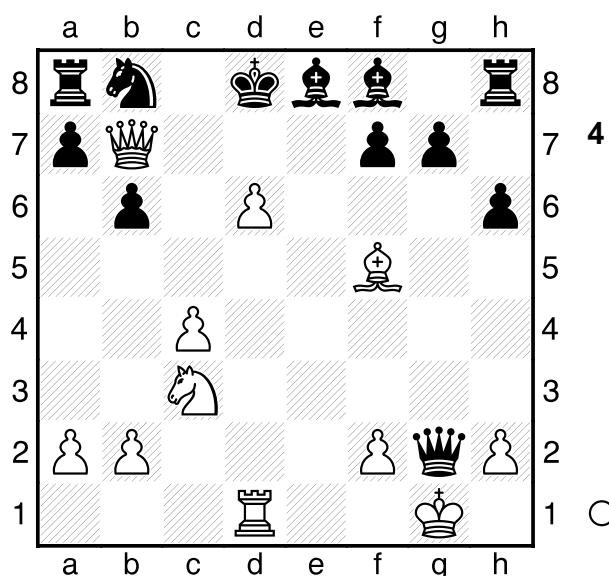


assesses it as +1.2 after black's best defence, Nc6. Nc6 20.Bxd7+ Kxd7 and here, Houdini assesses 21 c5 as its preference, with the same line opening/weakness creation idea, but black is not obliged to capture. I suspect in practice white's advantage is large, by expanding on the queen side whilst black is cramped and underdeveloped.) 19...Nxd7 20.Nd5?? was the line I foresaw, planning Nc7+, but (20.Nb5±) 20...Qxd6= 21.Nxb6 axb6 22.Rxd6 Bxd6 which Houdini says is equal, but I would prefer black.]

[18...Qg5 19.Rxe5+ (19.Qf3 is also +5 per Houdini, though it prefers Re5+, after which the evaluations are 15+.) 19...Kd8 20.Qe4 (20.Qf3 almost as good as Qe4) 20...Bc6 21.Re8+ Bxe8

A) 22.Qb7!! beautiful! I wonder if Houdini smiled when he saw this move? No, probably, so I still have one advantage over it. The rook sac blocks e8, so threatening Qc7 mate, which is even better than merely taking the rook. Qxg2+! Diagram (22...Bd7 23.Qc7+ Ke8

24.Re1+-)



exclamation mark for its prettiness. 23.Qxg2 ;

B) 22.Qxa8 Qxf5 23.d7 was the line I saw; thinking I had done well to envision this far; and also appreciating that the Nc3 controlled b1, so that if Bd6, I could capture it. My line is fine- Houdini assesses the position as +3, with the evaluation going higher, the longer it thinks. But Houdini finds some even better lines after 18... Qg5.]

[18...h5 19.Qf3+-]

19.Qxf5 Qd7 20.Qxe5+

[20.Rxe5+ was my preference, and indeed it is +7; for some reason Houdini prefers keeping the rook on e1 Kd8 21.Qe4 I guess the reason is that white now has something to calculate; namely what to play after 21...Nc6. Nc6 22.Re7+- (22.Nb5+-)]

20...Kd8+- The rest is easy **21.b4**

[21.Qd5 is Houdini's preference ΔNc6 (21...Bxd6 22.Qxa8) 22.Re7!!]

21...Nc6 22.Qe4 Rb8 23.c5 bxc5

24.bxc5 g6 25.Nd5 f5 26.Qa4 Qb7
27.Nc7 Rh7 28.Qc4
1-0