

C17

□ Fine, Reuben

■ Flohr, Salo

AVRO Holland (5)

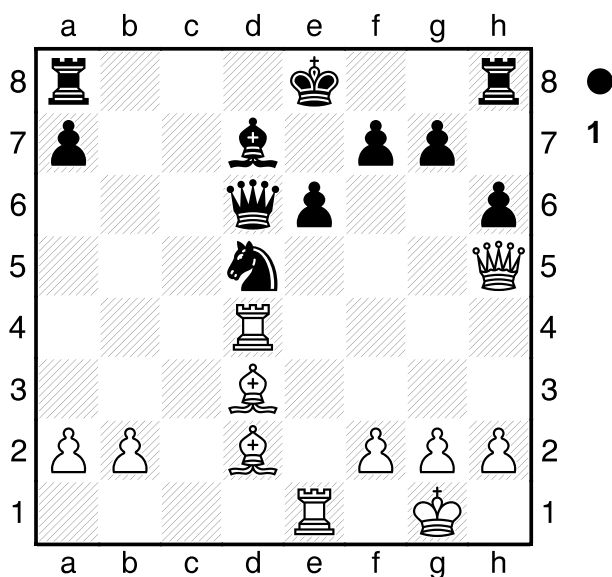
13.11.1938

1.e4 e6 2.d4 d5 3.Nc3 Bb4 4.e5 c5  
 5.Bd2 Ne7 6.Nf3 Nf5 7.dxc5 Bxc5  
 8.Bd3 Nh4 9.0-0 Nc6 10.Re1 h6  
 11.Na4 Bf8 12.Rc1! Houdini's first  
 choice: brings the rook into play, with  
 the planned c4. Bd7 13.Nxh4 Qxh4  
 14.c4 dxc4?!

[ 14...Nb4 15.Bb1 Na6 defends the  
 d5 pawn in an unusual way, with the  
 Bd7 and Qh4 hitting the Na4. White is  
 still better though. ]

15.Rxc4 Qd8 16.Qh5 Ne7 17.Rd4

[ 17.Nc5+- Nd5 18.Nxb7 Qb6  
 19.Nd6+ Bxd6 20.exd6 Qxd6  
 21.Rd4 Diagram



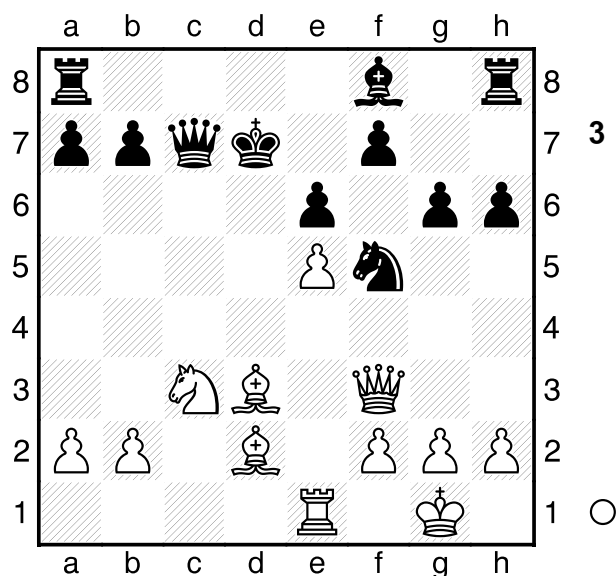
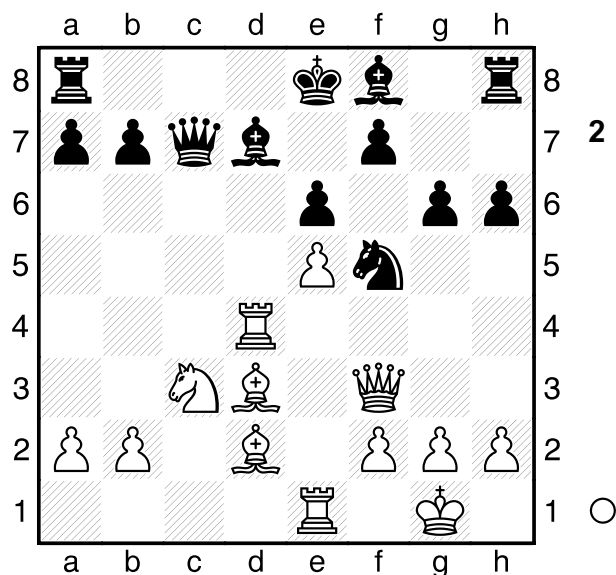
Houdini rates this as at least +3,  
 which I can't really see (not that I  
 doubt the engine, just I can't  
 appreciate the difficulties black is  
 under). ]

17...g6 18.Qf3 Qc7 19.Nc3 Nf5

Diagram

20.Nb5

[ 20.Rxd7!! Kxd7 Diagram



21.Nd5!! ( 21.Rc1!! Quite interesting  
 that "the threat is stronger than the  
 execution": i.e. rather than biffing the  
 queen with 20 Nb5 as in the game,  
 instead after the exchange sac,  
 follow up with the quite move 21 Rc1  
 which Houdini says is even stronger  
 than Nd5. 21 Rc1 gives flexibility to  
 move the knight elsewhere- a4, e4,  
 b5, dependent on black's response.

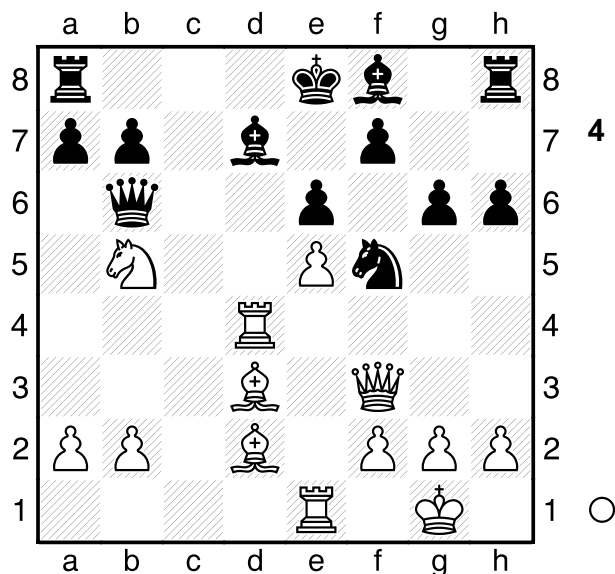
Rd8 22.Nb5+- ) 21...exd5 22.Qxd5+

A) 22...Kc8 23.Bxf5+ gxf5

24.Ba5!+- ( 24.Rc1+- );

B) 22...Ke8 23.Bb5+ Ke7

24.Bb4+ ]  
20...Qb6 Diagram



**21.Rxd7** There are various factors: two LPDOs (both rooks, especially the Rh8), a jump check Qf3-f7, so the knight is pinned to f5; an exposed black king, with white square pressure, so Ba5 works in some lines, because the Queen is needed to defend b7. Essentially, there is a preponderance of white's pieces: in some lines, the worst placed white piece, the Re1, enters the attack on d1, c1 or in one line e4.

**Kxd7** 22.g4

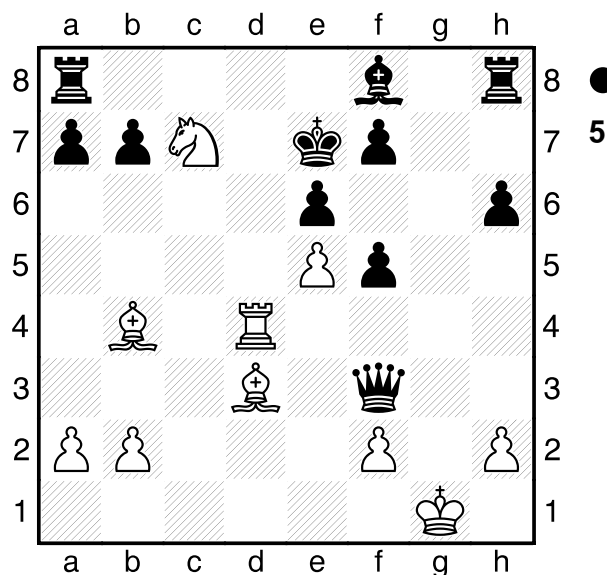
[ 22.Ba5 Qc6 23.Qd1 ]

**22...Nh4??**

[ 22...Qc6 23.Re4! ( 23.Qe2?! a6 24.gxf5 gxf5 25.-- ΔRg8+ ) 23...Ke8 ( 23...Bc5 24.b4 Bb6 25.Nc3 ) 24.gxf5 gxf5 25.Rd4! Qxf3 26.Nc7+ Ke7 27.Bb4# Diagram

(Diagram 5)

] **23.Qxf7+ Be7 24.Bb4 Rae8 25.Bxe7 Rxe7 26.Qf6** So, the Rh8 LPDO motif present in the puzzle position does have relevance. **a6 27.Rd1 axb5**



**28.Be4+**  
**1-0**