

□ **Ding,Liren** **D45**  
 ■ **Aronian,Levon** **2707**  
**2809**  
 Alekhine Memorial 2013 (1) 21.04.2013  
 [Robot 8]

(100m+30s)/40+(50m+30s)/20+(15m+30s)

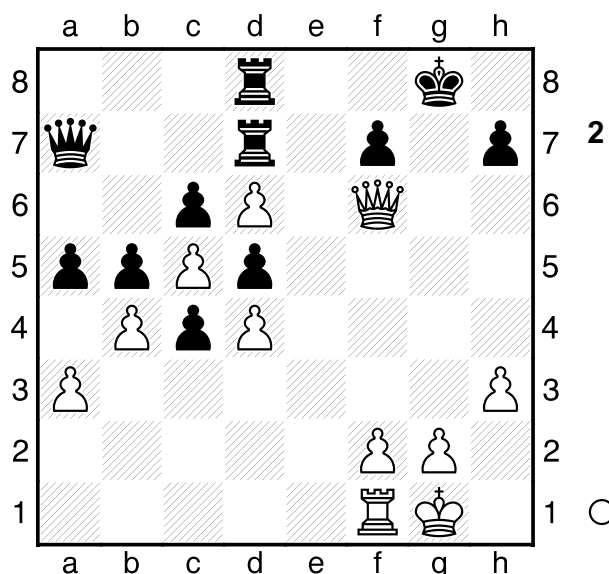
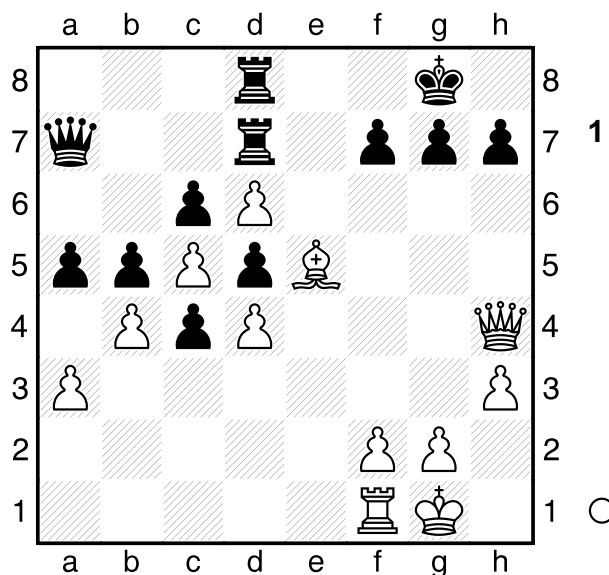
1.d4 d5 2.c4 c6 3.Nf3 Nf6 4.Nc3  
 a6 5.e3 e6 6.c5 Nbd7 7.b4 b6  
 8.Bb2 a5 9.a3 Be7 10.Bd3 0-0  
 11.0-0 Ba6 12.Ne1 Bc4 13.Bxc4  
 dxc4 14.Qe2 Rb8 15.Ra2 b5 16.e4  
 Rb7 17.Nc2 Nb8 18.Raa1 Qc8  
 19.Rad1 Rd8 20.Bc1 Na6 21.Bf4  
 Rbd7 22.h3 Ne8 23.Qe3 Bf6 24.e5  
 Whilst Houdini's assessment is a mere  
 +0.4, I wonder whether in reality black  
 is more or less lost? Too many of  
 black's pieces are away from the king  
 side, with little chance of getting over in  
 time. **Be7 25.Ne4 Nac7 26.Nd6 Qa8**  
**27.Qg3 Nd5 28.Ne3 Nc3 29.Rde1**  
**Bxd6 30.exd6 Ne4 31.Qh4 Nd2**  
**32.Nd5 Nxf1 33.Nb6 Qa7 34.Rxf1**  
**Nf6 35.Be5 Nd5 36.Nxd5 exd5**

Diagram

(Diagram 1)

Watching the game live, 37 Bg7 was  
 the obvious move, but I couldn't tell  
 whether it was only a draw. It was  
 clear that it was at least a draw, so  
 could be played with confidence, and  
 Ding had about 50 minutes left on his  
 clock, plenty of time to analyse. First of  
 course, he shows good technique by  
 repeating. **37.Bxg7+- Kxg7 38.Qg5+**  
**Kf8 39.Qf6 Kg8 40.Qg5+ Kf8**  
**41.Qf6 Kg8** Diagram

Here, I had to choose between f4 and  
 Re1. I correctly chose Re1, since I felt  
 f4, Rf3 would fail to ab, Qa3; and f4-f5



was too slow. **42.Re1 axb4**

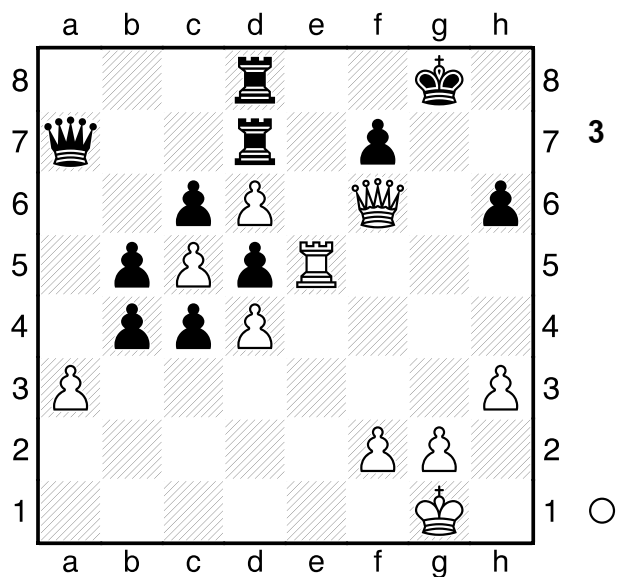
[ 42...h6 43.Re3 Kh7 44.Re7 Rf8  
 45.Qf5+ A nice double attack ends  
 the game. ]

[ 42...Qb8 43.Re3 Rxd6 44.cxd6  
 Qxd6 45.Re8+ ]

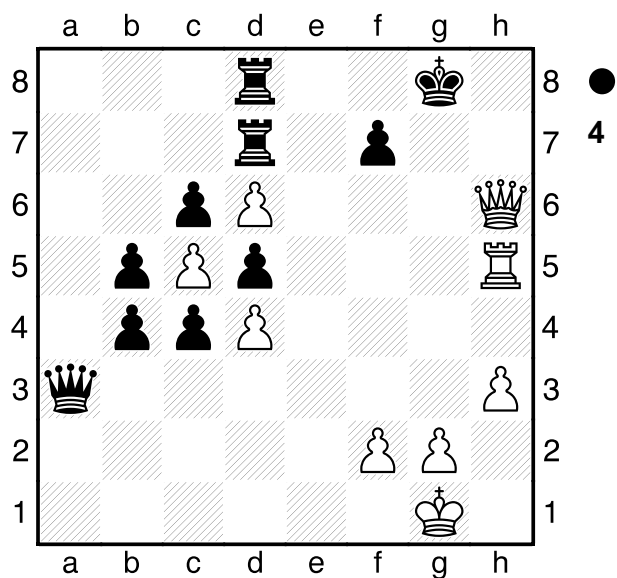
**43.Re5 h6** Diagram

(Diagram 3)

Even here, I wasn't sure if white was  
 winning: I had thought Rh5-h6; and  
 Qa3-c1+ Qh6; but hadn't seen 45 Qh6;  
 Ding played these last few moves



rapidly, before I had time to analyse them. **44.Rh5 Qxa3 45.Qxh6**  
Diagram



**f6 46.Qxf6** Diagram

(Diagram 5)

1-0

