

B50

□ Keres, Paul

■ Eliskases, Erich Gottlieb

Semmering/Baden (5)

1937

[Beardsworth, Allan]

1.e4 c5 2.Nf3 d6 3.b4 cxb4 4.d4
 Nf6 5.Bd3 d5 6.Nbd2 dxe4 7.Nxe4
 Nbd7 8.Neg5 Qc7 9.c4 h6 10.Nh3
 g5 11.Nhg1 Bg7 12.Ne2 0-0 13.0-0
 e5 14.Ng3 e4 15.Nxe4 Nxe4
 16.Bxe4 Qxc4 17.Bd3 Qd5 18.Re1
 g4 19.Nh4 Nb6 20.Rb1 Bd7 21.Re4

Keres gives this move a question mark.
 He prefers Rb4

[⊞21.Rxb4 which Houdini says is
 level; Houdini also doesn't like Re4]

21...Rfe8

[21...Na4 a line given by Keres
 22.Rxg4 Nc3 23.Bxh6 Nxd1
 24.Rxg7+ Kh8 25.Rh7+ Kg8
 26.Rg7+ Kh8= perpetual]

22.Rf4 Qd6

[⊞22...Qxa2]

[⊞22...a5]

[⊞22...Na4 Keres gives Na4 in his
 annotations, pg 134.]

23.Bd2 Nd5 Diagram

(Diagram 1)

24.Rxg4

[⊞24.Nf5 Qf6 25.Nxg7 Qxg7+]

[24.Rf5 Nc3 25.Bxc3 bxc3

26.Qxg4+]

24...Bxg4? Keres points out this is a
 mistake; he gives Nc3 as being better,
 equal/unclear.

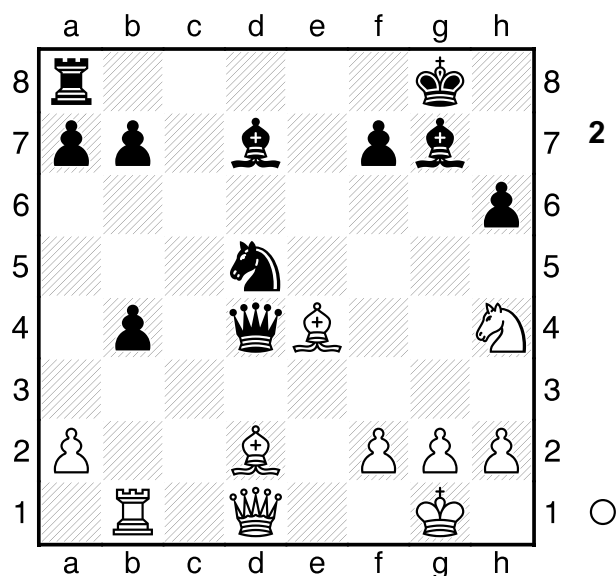
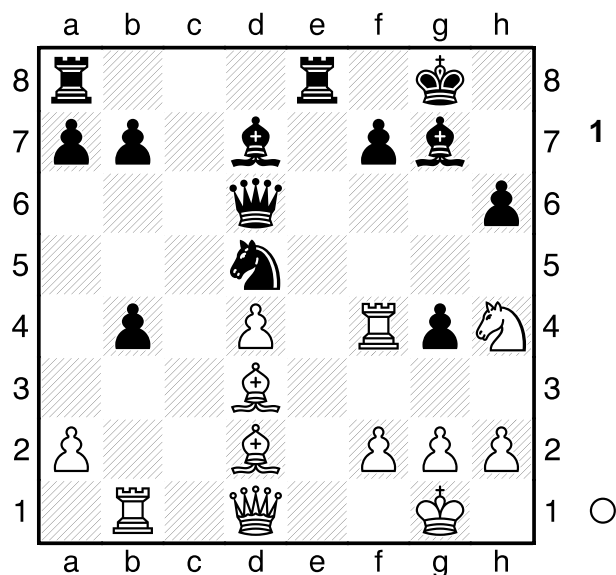
[⊞24...Qf6!+ and the rook is hanging.

25.Re4 best Rxe4 26.Bxe4 Qxd4

Diagram

27.Bxd5 Qxd5 28.Bxb4 Qxa2

Houdini says black is close to
 winning.]



[24...Nc3 25.Bxc3 bxc3=]

[24...Rad8 25.Bf5 Nc3 26.Bxc3
 bxc3±]**25.Qxg4 Qf6**

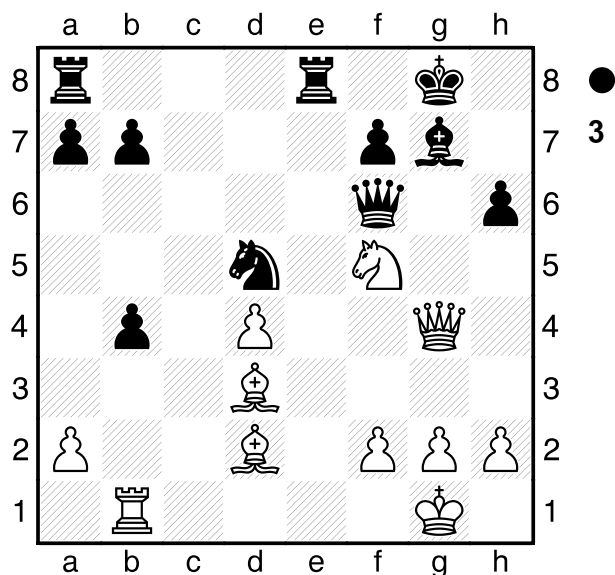
[25...Nf6 26.Qxg7+ Kxg7 27.Nf5+
 Kg8 28.Nxd6+-]

26.Nf5 Diagram

(Diagram 3)

Kf8

[⊞26...Kh8 27.Nxg7 (27.Qh5 Qg6
 28.Qh3 is the line given by Keres
 after ...Kh8, which he says is better



than Kf8; he just says etc after Qh3. In time it has taken to type this annotation, Houdini has switched to 28... Qe6 being +0.71; Qf6 +1.6 and all other lines as more than +3. I suspect if Houdini looked further at Qe6 it might find it too is winning for white, though it has the advantage of pinning the kinght whilst also looking at e1. Qe6□ However, I gave the machine a few minutes, and it continues to feel the position is +=. So Kh8 was better, as my intuition felt.) 27...Qxg7 28.Qh5 Nf6 29.Qh4±]

27.Nxg7+- Qxg7 28.Qh5 Nf6

29.Qh4 h5 30.Rxb4 Rac8?

[Δ30...Re6 31.h3 (31.Rxb7 Rb6+-) 31...Rb6 32.Ra4 a6 33.Ra5+- Houdini rates this as +4: Rg5, d5, Bb4+ being the typical moves. To me it looks unclear. Put your money on Houdini being right.]

31.h3 Rc7 32.Rb5 Re6

[32...Re6 33.Rxh5 Nxh5 34.Qd8+ Re8 35.Bb4+-]

33.Rxh5

1-0