

□ Zukertort, Johannes Hermann

■ Anderssen, Adolf

Breslau

1865

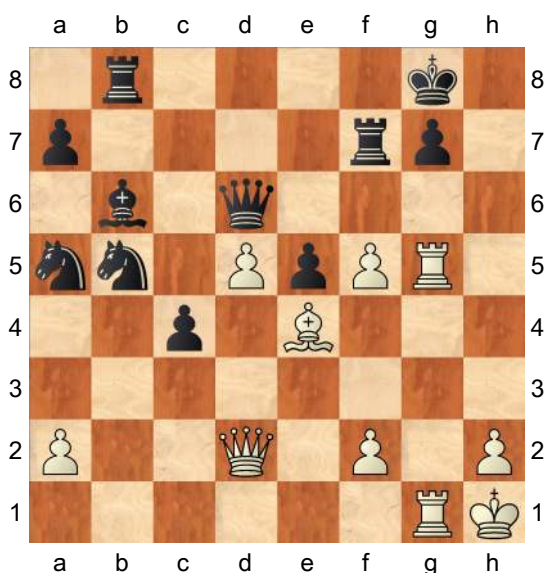
[Beardsworth, Allan]



Game not in Megabase nor online.

**1.g5** Houdini says black is winning, -6 in the initial position: and g5 is no better nor worse than other tries. **fxg5**

**2.Nxg5 hxcg5 3.Rxcg5** Diagram



**Qh6??=** Diagram

[ 10...c3 4.Qe2 Bd8-- ]

**4.Rxcg7+ Qxcg7 5.Rxcg7+ Rxcg7=**

[ 5...Kxcg7= 6.Qg5+ Kf8 7.Qh6+ Kg8



**8.Qg6+ Rg7 9.Qe6+ Rf7 10.f6=**

**Rbb7??** ( 10...Bc5= ) **11.Bg6?**

wins, is Cordingley's line, with my annotations. Bg2 drops the assessment from +sky high to +2, so yes, winning, but not efficiently.

( 11.Qe8+ is mate in 12, per Houdini

**Rf8** 12.Qg6+ **Kh8** 13.d6+-

so, whilst #10 isn't human, it is

obvious that white is winning, once he either gets the B to d5 or wins

material. **Nc3** 14.Bf5 ) 11...Bc5

12.Bxf7+ **Rxf7** 13.Qe8+ **Bf8**

14.Qxb5 **Nb7** 15.Qxc4 **Rxf6**

and the game goes on, even though Houdini says +1.5. ]

**6.f6 Rf7 7.Qg5+ Kf8**

[ 7...Kh8?? 8.d6+- ]

**8.Qh6+ Kg8??+-**

[ 8...Ke8

**A) 9.Qh8+ Rf8** (or 9...Kd7 );

**B) 9.Bg6 Nd6 10.Qh8+ Kd7**

11.Qxb8 **Rxf6=** ]

**9.Bf5??**

[ 9.d6!+-

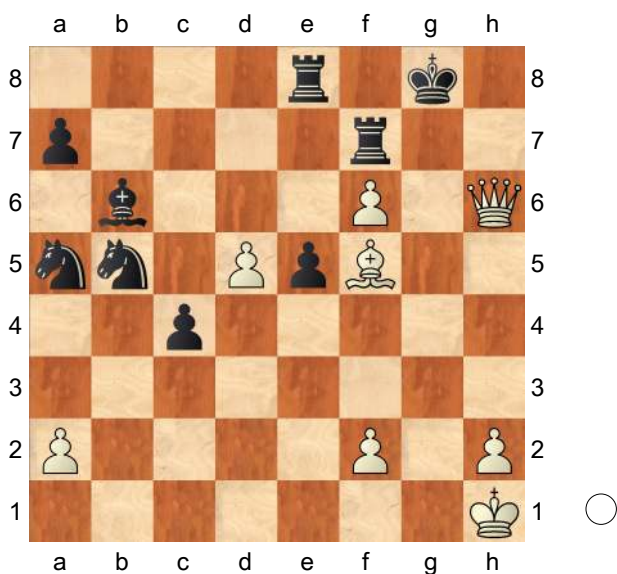
**A) 9...Nxd6 10.Bd5 Nf5** ( 10...c3 11.Qg7# ) 11.Qg6+ **Kh8** 12.Qxf7 ;

**B) 9...Nc3 10.Bf5 Re8 11.Bh7+!** ]

**9...Re8??** Diagram

[ 9...Nd4! 10.Be6 **Nxe6** 11.dxe6

Rbb7= ]

**10.Be6?+-**

[Be6 wins, but better is: 10.Bh7+!  
pretty

**A)** 10...Rxb7 11.Qg6+ Kf8  
( 11...Kh8 12.Qxe8# ) 12.Qxb7 ;

**B)** 10...Kh8 11.Bg6+ Kg8  
12.Bxf7+ Kxf7 13.Qg7# ]

**1-0**